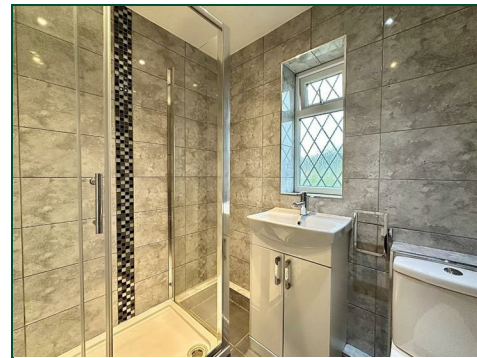




Braemar Crescent

East Hunsbury, Northampton

oriordanbond
SALES & LETTINGS



Braemar Crescent

East Hunsbury

NN4 0FG

PRICE £235,000

Offered to the market with no onward chain is this well presented two double bedroom semi detached home situated in the popular area of East Hunsbury.

The accommodation comprises; entrance hall with stairs to the first floor, a modern fitted kitchen and good size sitting/dining room with space for furniture and patio doors to the rear garden. To the first floor expect to find two double bedrooms with fitted wardrobes and a refitted contemporary shower room. To the front is a driveway for several cars and to the rear you will find a landscaped garden. (A/573/M)

Additional information

- Council Tax Band: B
- Energy Efficiency Rating: C

Viewing

Viewing strictly by appointment – details below

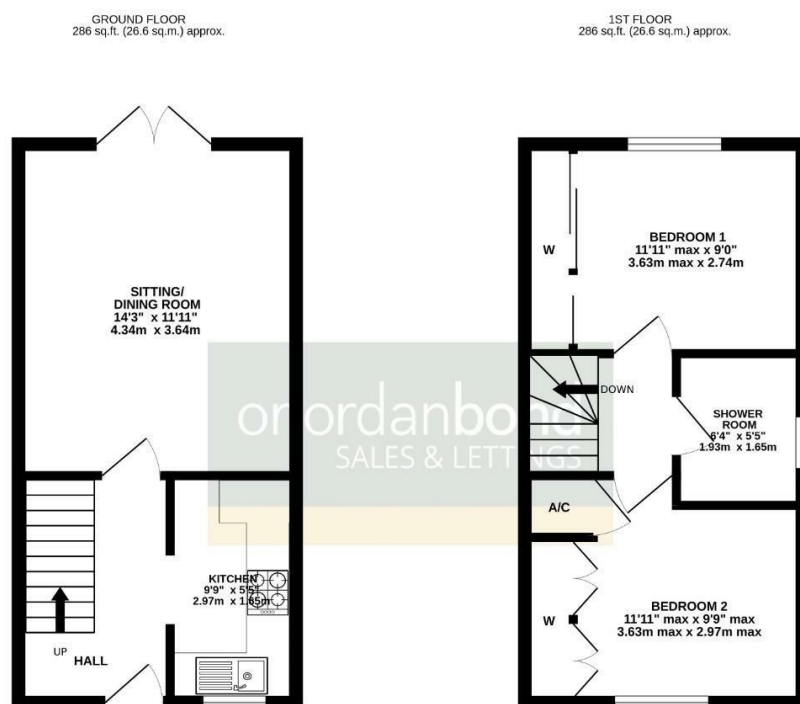
Disclaimer

O'Riordan Bond Estate Agents Limited has not tested apparatus, equipment, fittings or services and so cannot verify they are in working order. The buyer is advised to obtain verification from their solicitor or surveyor.

O'Riordan Bond Hunsbury Sales

01604 706007

hunsbury@oriordanbond.co.uk



TOTAL FLOOR AREA : 573 sq.ft. (53.2 sq.m.) approx.
Whilst every attempt has been made to ensure the accuracy of the floorplan contained here, measurements of doors, windows, rooms and any other items are approximate and no responsibility is taken for any error, omission or mis-statement. This plan is for illustrative purposes only and should be used as such by any prospective purchaser. The services, systems and appliances shown have not been tested and no guarantee as to their operability or efficiency can be given.
Made with Metreapp G2024